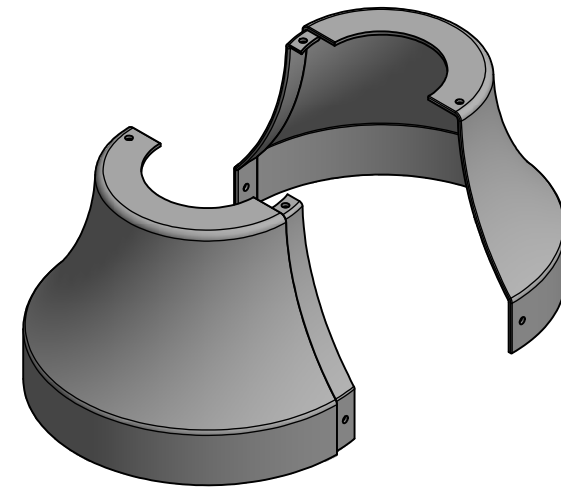
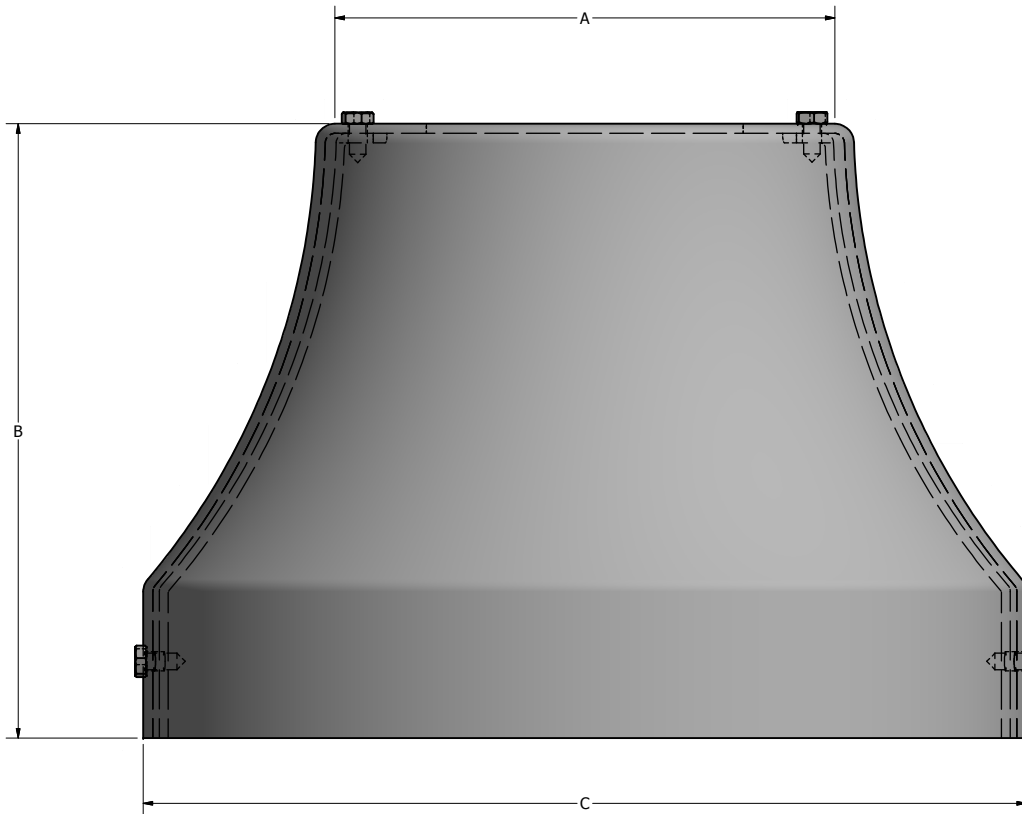


NOTE: FINISH SHALL BE A STANDARD COLOR POLYESTER POWDER COAT FINISH.

WASHINGTON SERIES			
POLE	BASE COVER		
SHAFT O.D.	A (TOP I.D.)	B (HEIGHT)	C (BOTTOM O.D.)
4.75"	5.00"	8.00"	11.50"



CLAMSHELL BASE COVER

<p>180° 270° 0° HAND HOLE</p>	DRAWN: L. GRUNIS	12/12/2016
	CHECKED:	
	REVISION:	DATE:
	APPROVED:	
	QUOTE:	
	S.O.#	
REF:	SCALE: NONE	



23171 GROESBECK HWY
WARREN, MI 48089
(586) 774-5750
www.unipostsystems.com

<p>SOME GEOGRAPHICAL AREAS HAVE SPECIAL WIND CONDITIONS THAT CAN CREATE WIND INDUCED VIBRATIONS CAUSING A FATIGUE PROBLEM. NO METHOD HAS YET BEEN FOUND FOR PREDICTING DESTRUCTIVE LIGHTING POLE VIBRATION. THESE CONDITIONS ARE UNIQUE AND CANNOT BE GUARANTEED AGAINST, AND ARE THE RESPONSIBILITY OF A LOCAL SITE ENGINEER.</p>		
TITLE: BELL BASE COVER FOR ROUND POLES		
CATALOG:		
DWG NO: UPBC-BELL-1208-475RD	SIZE: C	SHEET 1 OF 1