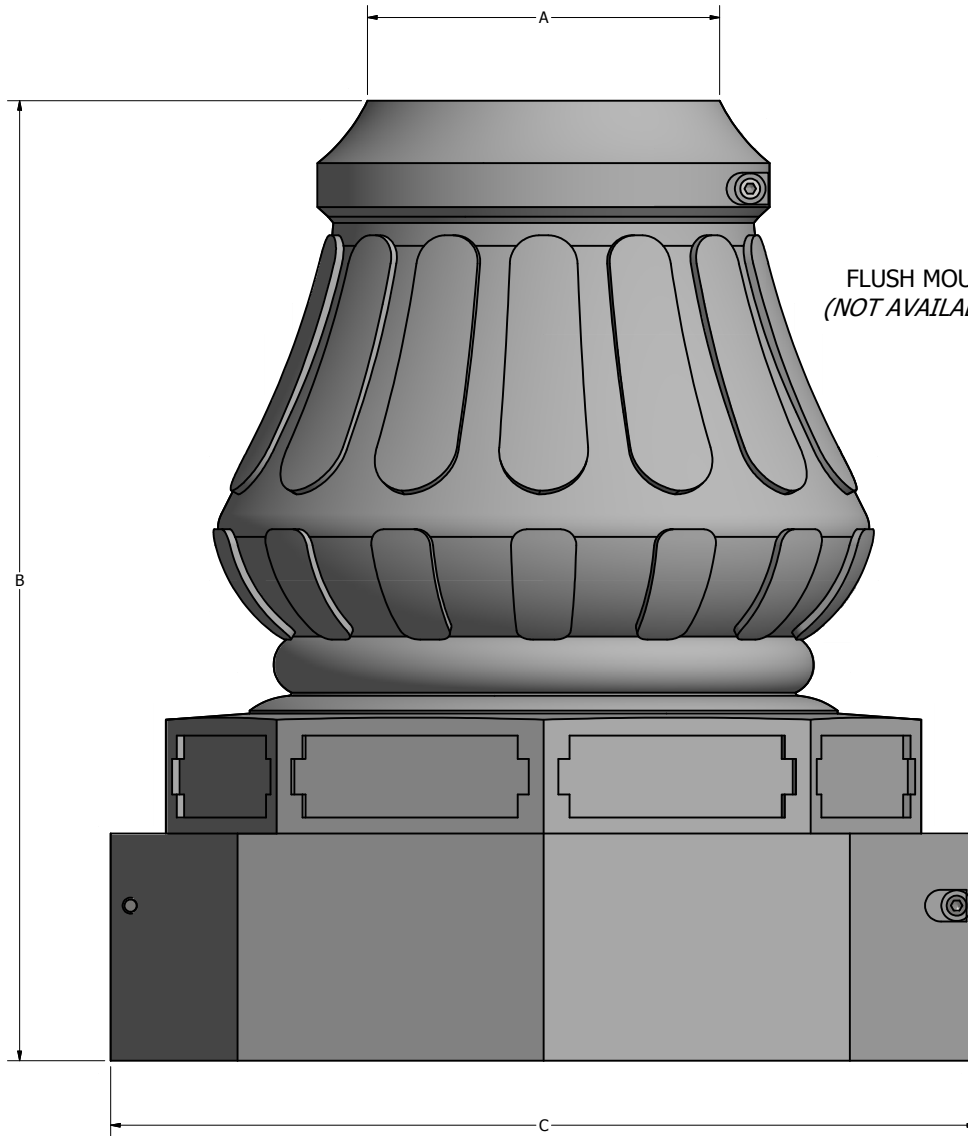
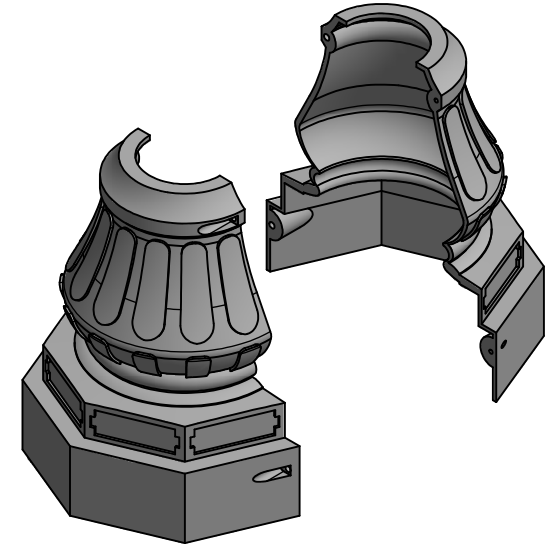


**NOTE:** FINISH SHALL BE A STANDARD COLOR POLYESTER POWDER COAT FINISH.

WASHINGTON OCTAGON SERIES			
POLE SHAFT O.D.	BASE COVER A (TOP I.D.)	B (HEIGHT)	C (BOTTOM O.D.)
2.75"	3.00"	15.00"	12.00"
4.75"	5.00"	20.25"	18.50"
7.75"	8.00"	37.00"	25.00"



FLUSH MOUNT HAND HOLE  
(NOT AVAILABLE ON 3" COVER)



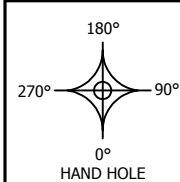
CLAMSHELL BASE COVER

UPBC-WASO-## ##-###RD

BOTTOM O.D.

POLE SHAFT O.D.

HEIGHT



DRAWN: L. GRUNIS	12/12/2016
CHECKED:	
REVISION:	DATE:
APPROVED:	
QUOTE:	
S.O.#	
REF:	SCALE: NONE



23171 GROESBECK HWY  
WARREN, MI 48089  
(586) 774-5750  
www.unipostsystems.com

SOME GEOGRAPHICAL AREAS HAVE SPECIAL WIND CONDITIONS THAT CAN CREATE WIND INDUCED VIBRATIONS CAUSING A FATIGUE PROBLEM. NO METHOD HAS YET BEEN FOUND FOR PREDICTING DESTRUCTIVE LIGHTING POLE VIBRATION. THESE CONDITIONS ARE UNIQUE AND CANNOT BE GUARANTEED AGAINST, AND ARE THE RESPONSIBILITY OF A LOCAL SITE ENGINEER.

TITLE: WASHINGTON OCTAGON BASE COVER FOR ROUND POLES

CATALOG:

DWG NO: UPBC-WASO-###-###RD

SIZE: C SHEET 1 OF 1